

EOVE-150

Life support ventilation



MOVE AND CARE CONCEPT BY

EOVE+

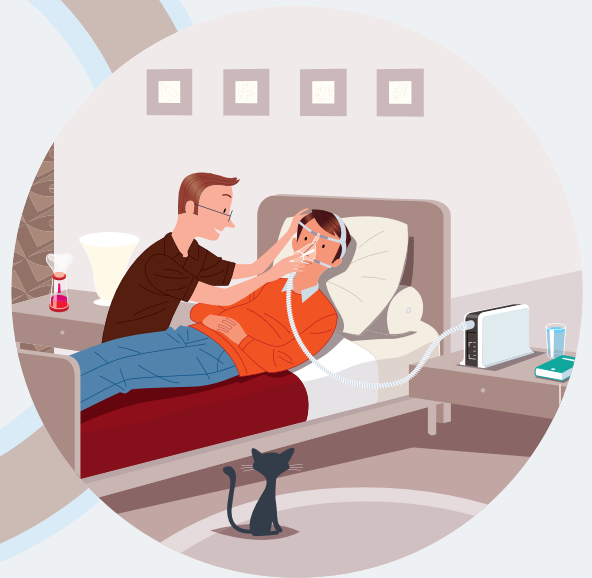
Air Liquide Healthcare

Protecting vulnerable lives

Every patient with a chronic condition requires **continuous personalised support**.
Air Liquide Healthcare develops **solutions** to:



Facilitate decision-making in hospitals and pneumology wards for diagnosis and setting up new treatments.



Provide treatments that are comfortable, effective and suitable for patients' homes.



Facilitate interaction between healthcare providers and medical teams to identify at-risk patients, anticipate events before they happen and focus attention on those with the greatest need.

EOVE-150

A complete solution



A suitable treatment for all solutions:

- ▶ For **pediatric** patients from 3,5 kg, with a tidal volume of 30mL
- ▶ Ventilate according to the need: volume or pressure
- ▶ Complete choice of circuit configuration: with valves, with leak, simple limb, double limb or mouthpiece
- ▶ **High-flow** mode to save up space at patient's home
- ▶ **Mouthpiece** modes for a better quality of life



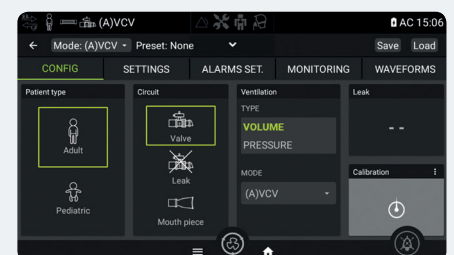
Freedom and mobility:

- ▶ Click&Go concept based on swappable ventilation module of 1,8 kg
- ▶ **Mobility** solutions with a bag for the module and external batteries
- ▶ Autonomy up to **18h with external batteries**



Modularity and intuitivity:

- ▶ Settings and monitoring view on the same screen
- ▶ Scalable interfaces
- ▶ **Easy** to configure
- ▶ Up to **4 renameable** and customizable presets





Connectivity via 4G or USB key:

- ▶ Ventilation data: Download and analysis of **detailed data** with statistics, waveforms and trend graphics
- ▶ Maintenance data recovery in **real time**



Monitoring solutions



Transcutaneous **CO₂** monitoring with Sentec



SpO₂ monitoring via Xpod or BT



FiO₂ monitoring kit (cable only)

From 3,5 kg,
from 30 mL

Easy
to use

Modular
interfaces

Remote
monitoring
via 4G

Designed
and manufactured
in France

Liberty
and mobility

C-Flow
mode

 **PASS**
FRENCH TECH

Settings

Valve modes (A)VCV - (A)PCV - PSV - PSV-VT - V-SIMV - P-SIMV		
Settings	Adult	Pediatric
VT (ml)	300 - 2500	30 - 600
PEEP (mbar)	OFF / 1 - 25	OFF / 1 - 20
Flow ramp	Square / Decelerating	Square / Decelerating
Rate (c/min)	5 - 60	8 - 80
I. Time (sec)	0,3 - 2,5	0,3 - 2,5
I. Trig	OFF / AUTO / 1 - 5	OFF / AUTO / 1 - 5
E. Trig (%)	AUTO / 10 - 90	AUTO / 10 - 90
Pres. Control (mbar)	5 - 59	5 - 59
Pres. Support (mbar)	5 - 59	5 - 59
Pres. Ramp	1 - 5 (100 - 500 ms)	1 - 5 (50 - 250 ms)
I. Time Min (sec)	AUTO / 0,3 - 2,5	AUTO / 0,3 - 2,5
I. Time Max (sec)	AUTO / 0,3 - 2,5	AUTO / 0,3 - 2,5

Mouthpiece modes MPV - MPP		
Settings	Adult	Pediatric
VT (ml)	300 - 2500	100 - 600
Flow ramp	Square/Decelerating	Square/Decelerating
Rate (cpm)	OFF / 5 - 60	OFF / 5 - 80
I. Time (sec)	0,3 - 2,5	0,3 - 2,5
I. Trig	OFF / AUTO / 1 - 5	OFF / AUTO / 1 - 5
Blas Flow (L/min)	1 - 20	1 - 20
Pres. Control (mbar)	5 - 59	5 - 59
Clinical		
Indications	Life support / >3,5 kg	
Circuits types	Simple / Double limb	
Presets	1 to 4 customizable presets	
Physical		
Physical	Docking	Module
Weight	1,3 kg	1,8 kg
Dimension	25 x 21 x 13 cm	24,5 x 14,5 x 10 cm
Supply		
Power supply	220-240 VAC	
Internal battery	Lithium Ion 2.8 Ah	4 hours
External DC Input	13 - 30 V	115 W

Leak Modes CPAP - PAC - ST - VTS - C-FLOW		
Settings	Adult	Pediatric
VT (ml)	300 - 2500	30 - 600
CPAP (mbar)	4 - 20	4 - 20
IPAP (mbar)	6 - 50	6 - 50
EPEP (mbar)	4 - 25	4 - 25
Rate (cpm)	5 - 60	5 - 80
I. Time (sec)	0,3 - 2,5	0,3 - 2,5
I. Trig	OFF / AUTO / 1 - 5	OFF / AUTO / 1 - 5
E. Trig (%)	AUTO / 10 - 90	AUTO / 10 - 90
Pres. Ramp	1 - 5 (100 - 500 ms)	1 - 5 (100 - 500 ms)
I. Time Min (sec)	AUTO / 0,3 - 2,5	AUTO / 0,3 - 2,5
I. Time Max (sec)	AUTO / 0,3 - 2,5	AUTO / 0,3 - 2,5
C-Flow (L/min)	2 - 60	2 - 60

Item numbers

	Item numbers
EO-150 Ventilator	EO-150VNT EUR
Transport bag	EO-CARBAG1X0
Travel bag	EO-TRVELBAG1X0
Nomad bag	EO-NOMADBAG-EVO
Battery pack	EO-BATPCK
Battery Pack Coupling Cable	EO-CPLPACK
Battery bag	EO-BATBAG
Trolley	EO-TROLLEY

EO-150 provides continuous or intermittent ventilation support for adults and children weighing at least 3.5 kg needing mechanical ventilation, at home, in a facility or hospital, and in portable environments, for invasive or non-invasive ventilation.
Medical device class IIb - CE 0459 - Manufactured by EOVE and distributed by Air Liquide Healthcare Ireland. Please read the user manual.



For more information please contact us at:

Air Liquide Healthcare, Stratus House, Unit 1 IDA College Park, Blanchardstown Road North, Blanchardstown, Dublin 15, D15 PEC4.

Tel: +353 (0)1 809 1800 Freephone: 1800 24 02 02 (ROI only) 0800 328 5875 (NI only)

Fax: +353 (0)1 829 3966 Email: healthie@airliquide.ie Website: www.airliquidehealthcare.ie